



Škoda Superb Sedan Specification

Model Year 2011

Issued: May 2010

Superb Sedan	TSI 118	TDI 103	TDI 125
Recommend Retail Price *			
Manual	-	-	-
Automatic	\$46,000	\$48,500	\$59,500
Technical Data			
Engine Type	Petrol	Diesel	Diesel
Displacement (cm ³)	1,798	1,968	1,968
Power Output - kW @ rpm	118 @ 4,500-6,200	103 @ 4,200	125 @ 4,200
Torque - Nm @ rpm	250 @ 1,500-4,500	320 @ 1,750-2,500	350 @ 1,750-2,500
Cylinders	4	4	4
Drive train	Front Wheel Drive	Front Wheel Drive	Front Wheel Drive
Transmission - manual	N/A	N/A	N/A
Transmission - automatic	7 speed DSG	6 speed DSG	6 speed DSG
Efficiency			
Fuel Economy - EU, In Town (Litres/100km)	9.4	7.5	7.6
Fuel Economy - EU, Out of Town (Litres/100km)	5.7	5.0	5.1
Fuel Economy - EU, Combined (Litres/100km)	7.1	5.9	6.0
CO ₂ Emissions (g/km)	168	154	157
Diesel Particulate Filter	N/A	std	std
Emissions Standard	EU5	EU5	EU5
Performance			
0-100 km/h in seconds	8.5	10.2	8.8
Maximum speed in km/h	220	206	220
Drag Coefficient	0.31	0.30	0.30
Dimensions			
Length (mm)	4,838	4,838	4,838
Width (mm)	1,817	1,817	1,817
Height (mm)	1,462	1,462	1,462
Luggage Capacity (litres)	565 / 1,670	565 / 1,670	565 / 1,670
Fuel Capacity (litres)	60	60	60
Safety & Security			
Activation of Warning Lights During Panic Braking	std	std	std
Airbags - Curtain and Side in Front	std	std	std
Airbags - Driver and Passenger Front and Driver Knee	std	std	std
Airbags - Side in Rear	opt	opt	std
Anti Theft Alarm	std	std	std
ASR Traction Control	std	std	std
EBV (Electronic Braking Effect Distribution incl. ABS)	std	std	std
ESP (Electronic Stability Programme)	std	std	std
Front Headrest Safety System	std	std	std
Hill Hold Control	-	-	std
Isofix Front Passenger Seat (incl. airbag deactivation)	std	std	std
Isofix Rear Seats (x 2)	std	std	std
Light Assist	std	std	std
Remote Central Locking	std	std	std
Three Rear Headrests with Diagonal Seat Belts	std	std	std
Tyre Pressure Monitoring	-	-	std
Vehicle Immobiliser	std	std	std
Exterior Specification			
Bi-Xenon Head Lights with AFS and Washers	-	-	std
Chrome Trims	-	-	std
Entry Area Illumination in Mirrors	std	std	std
Front Fog Lights	std	std	-
Front Fog Lights with Corner Function	-	-	std
Electric, Heated, Folding and Auto Dimming Exterior Mirrors	std	std	std
Metallic Paint	std	std	std
Parking Sensors - Rear	std	std	std
Parking Sensors - Front	-	-	std
Rain Sensing Wipers	std	std	std

Superb Sedan	TSI 118	TDI 103	TDI 125
--------------	---------	---------	---------

Interior Specification

Auto Dimming Rear View Mirror	std	std	std
Auxiliary Input into Stereo for MP3 Players (i.e. for iPod)	std	std	std
Bluetooth Phone Prep II with Buttons on Steering Wheel (without holder)	std	std	std
CD - Single Slot CD/Stereo with 8 Speakers (Swing)	std	std	-
CD - 6 Disc in-Dash Stereo with SD card reader (Bolero)	opt	opt	std
Chilled, Illuminated Glovebox	std	std	std
Comfort Front Seats	-	-	std
Cruise Control	std	std	std
Cupholders in Centre Console and Rear Armrest	std	std	std
Digital Equaliser, Amplifier and 10 Speakers	-	-	std
Dual-Zone Climatronic Air Conditioning	std	std	std
Electric Front Seats with Memory for Driver	-	-	std
Electric Windows Front and Rear	std	std	std
Floor Mats	std	std	std
Glasses Holder	std	std	std
Heated Front and Rear Seats	-	-	std
Height Adjustable Front Seats	std	std	std
Hooks for Bags in Luggage Compartment	std	std	std
Interior Trim - Stromboli Lacquered Inlays	std	std	-
Interior Trim - Mirage Metallic Inlays	-	-	std
Leather 4-Spoke Multi-Function Steering Wheel	std	std	std
Luggage Compartment Cover with Net Under	std	std	std
Maxi Dot Information Display	std	std	std
Multi-function Double Trip Computer	std	std	std
Net Programme	std	std	std
Rear Armrest (with luggage compartment access)	std	std	std
Split Folding Rear Seats (1/3 and 2/3)	std	std	std
Storage Box under Front Armrest	std	std	std
Ticket Holder in Front Window	std	std	std
Tie-Down Hoops in Luggage Compartment	std	std	std

Upholstery

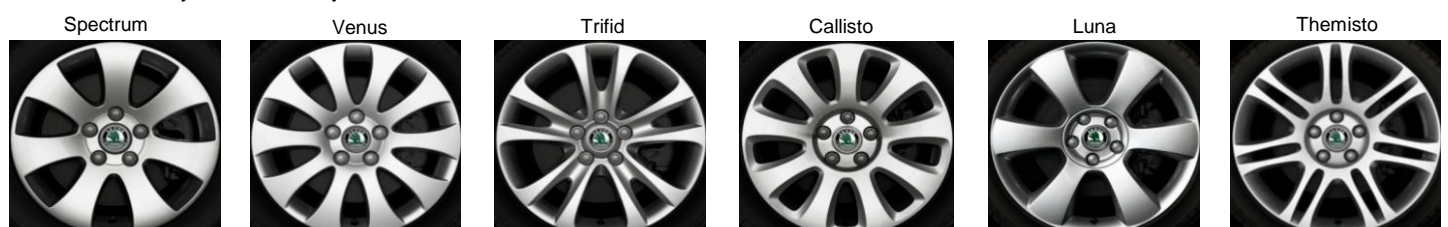
Ray Cloth (Comfort)	std	std	-
Glamour Leather (Elegance)	-	-	std

Optional Equipment

3-Spoke Leather Steering Wheel w Paddles for DSG	PLD	\$600	\$600	\$600
Airbags - Side in Rear	PE3	\$650	\$650	std
Columbus Navigation with 30GB Hard Drive	RNA	\$4,900	\$4,900	\$4,200
Columbus Navigation with 30GB Hard Drive and TV Tuner	RNC	\$6,600	\$6,600	\$5,900
Electric Two-Way Sunroof	3FE	\$2,000	\$2,000	\$2,000
Electric Two-Way Sunroof with Solar Cells	3FR	\$2,800	\$2,800	\$2,800
False Floor with Storage in Luggage Compartment	PK3	\$350	\$350	\$350
Interior Trim - Noblesse Wooden Inlays	5TK	-	-	\$100
Lounge Steps for Rear Seat Passengers	OTR	\$250	\$250	\$250
Mobile Device Interface (Requires Genuine Accessory Cable)	UF6	\$300	\$300	\$300
Parking Assistant	PPA	\$1,300	\$1,300	\$550
Radio Bolero with Integrated CD Changer and SD Card	RAB	\$700	\$700	std
Sun Shades for Rear and Side Windows	3Y3	\$650	\$650	\$650
SunSet Glass	4KF	\$550	\$550	\$550

Alloy Wheels

16" Spectrum Alloys with 205/55 tyres		std	std	-
17" Venus Alloys with 225/45 tyres		-	-	std
17" Trifid Alloys with 225/45 tyres	PJ2	\$1,100	\$1,100	\$100
17" Callisto Alloys with 225/45 tyres	PJ1	\$1,200	\$1,200	\$200
18" Luna Alloys with 225/40 tyres	PJ4	\$2,000	\$2,000	\$1,000
18" Themisto Alloys with 225/40 tyres	PJ3	\$2,150	\$2,150	\$1,150



* Retail prices exclude On Road Costs. Škoda NZ reserves the right to alter prices and specifications without notice.